



ROSATOM

STATE ATOMIC ENERGY CORPORATION "ROSATOM"

NIAEP – ASE. Planning of Purchases and Supplies

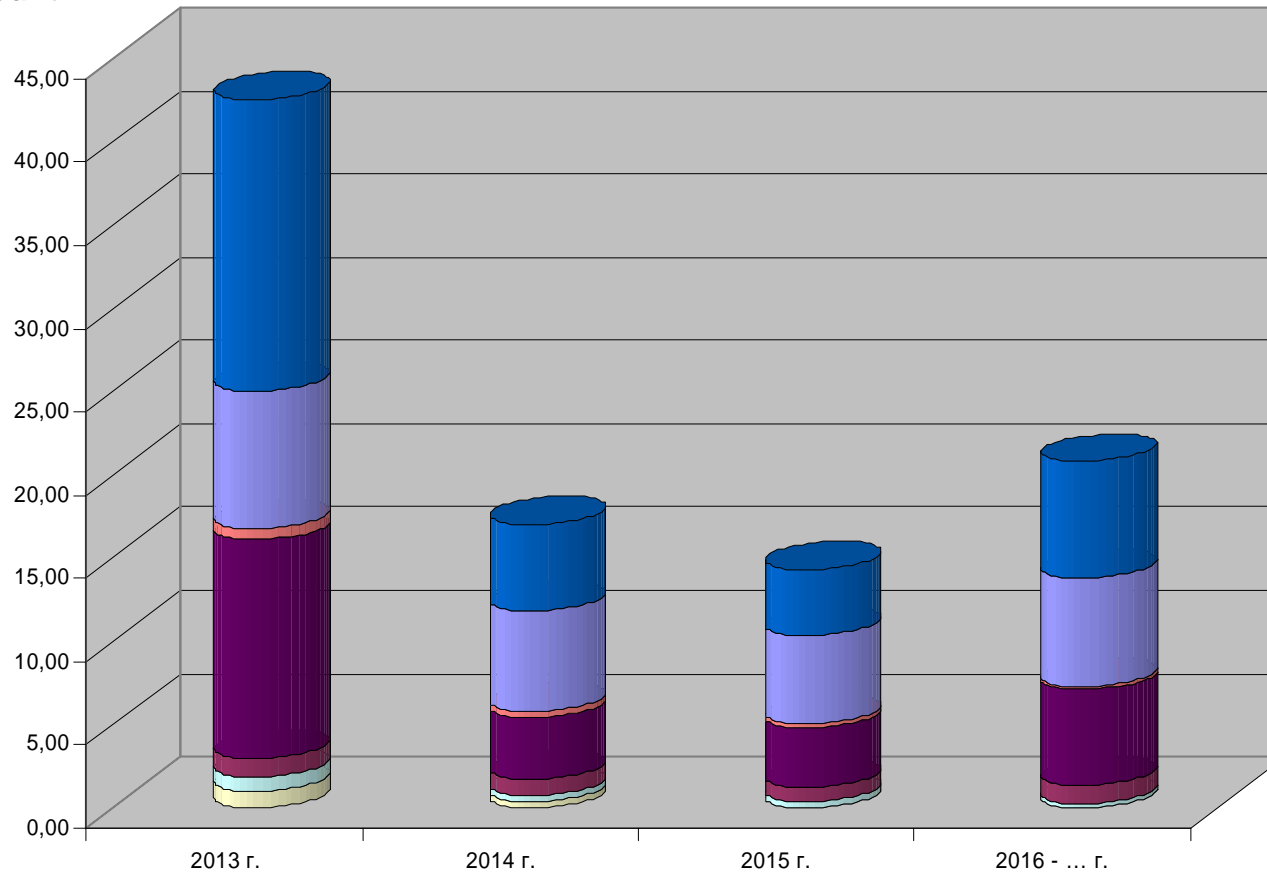
"Atomex-Europe 2013" Forum

A.N. Potapov
Head of Main Division for Marketing and Business
Moscow Branch of NIAEP JSC

October 8-9, 2013
Brno, Czech Republic

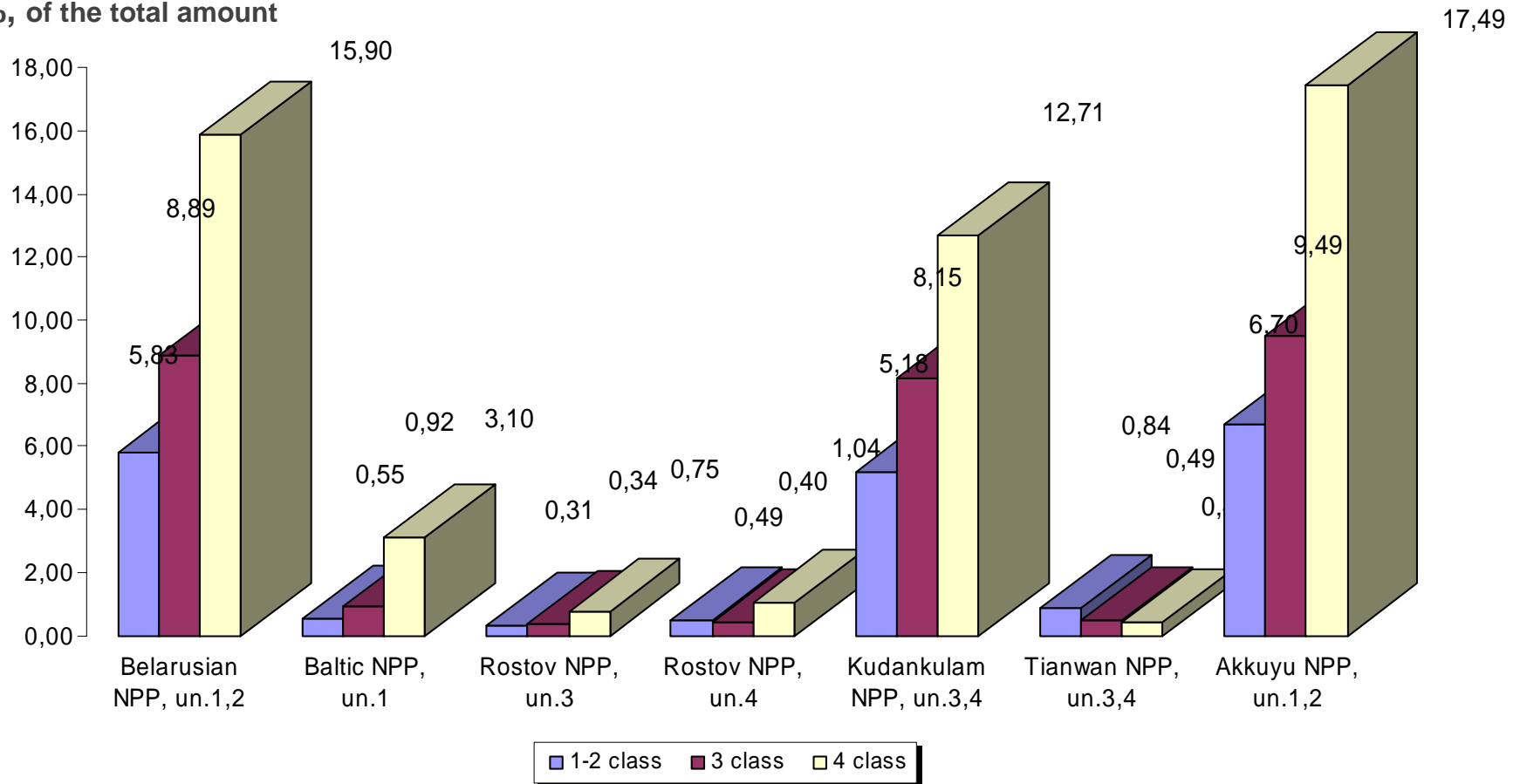
Purchase Plan as per Years of NPPs Construction

%, of the total amount



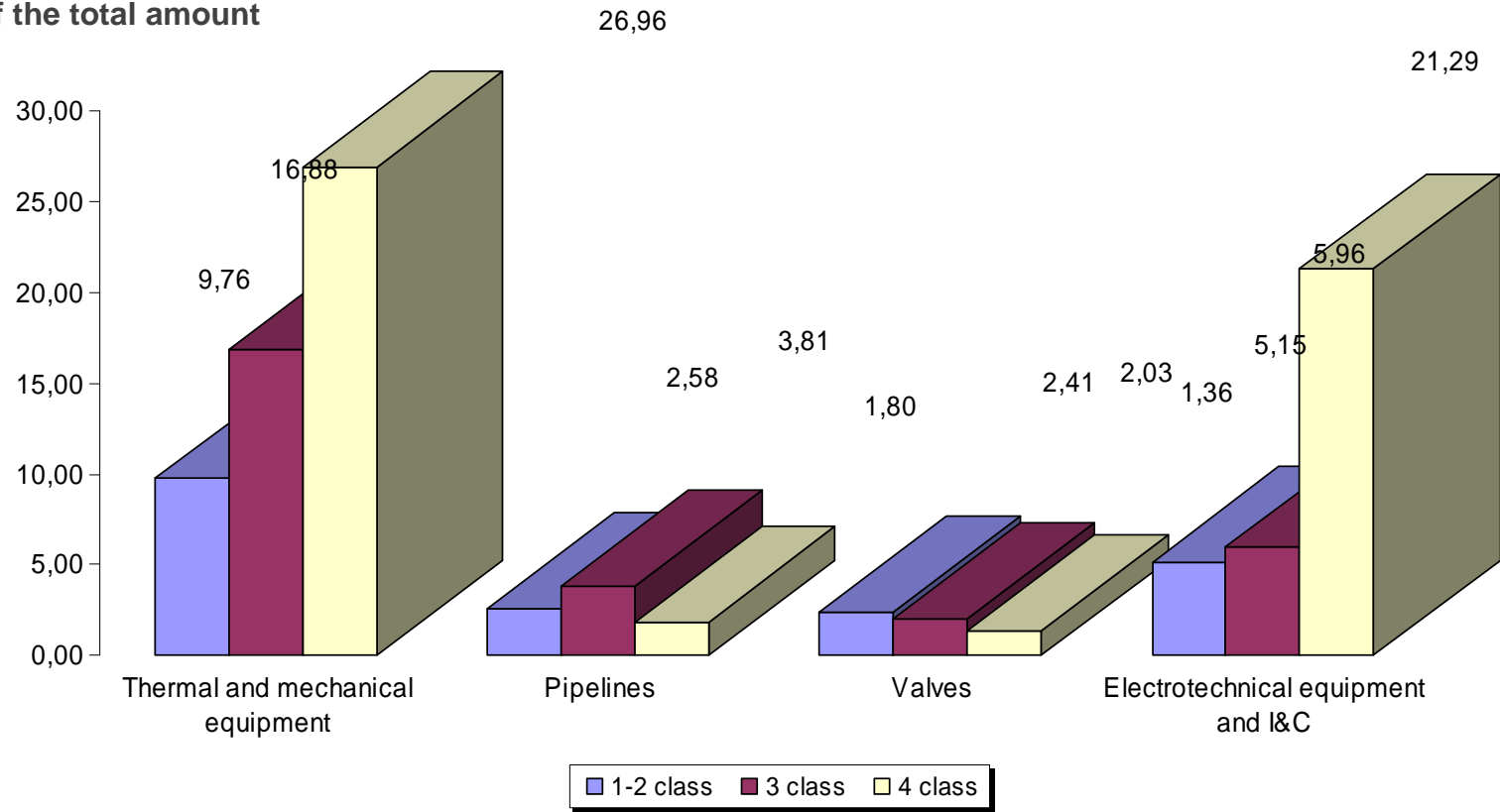
Purchase Plan for NPPs

%, of the total amount



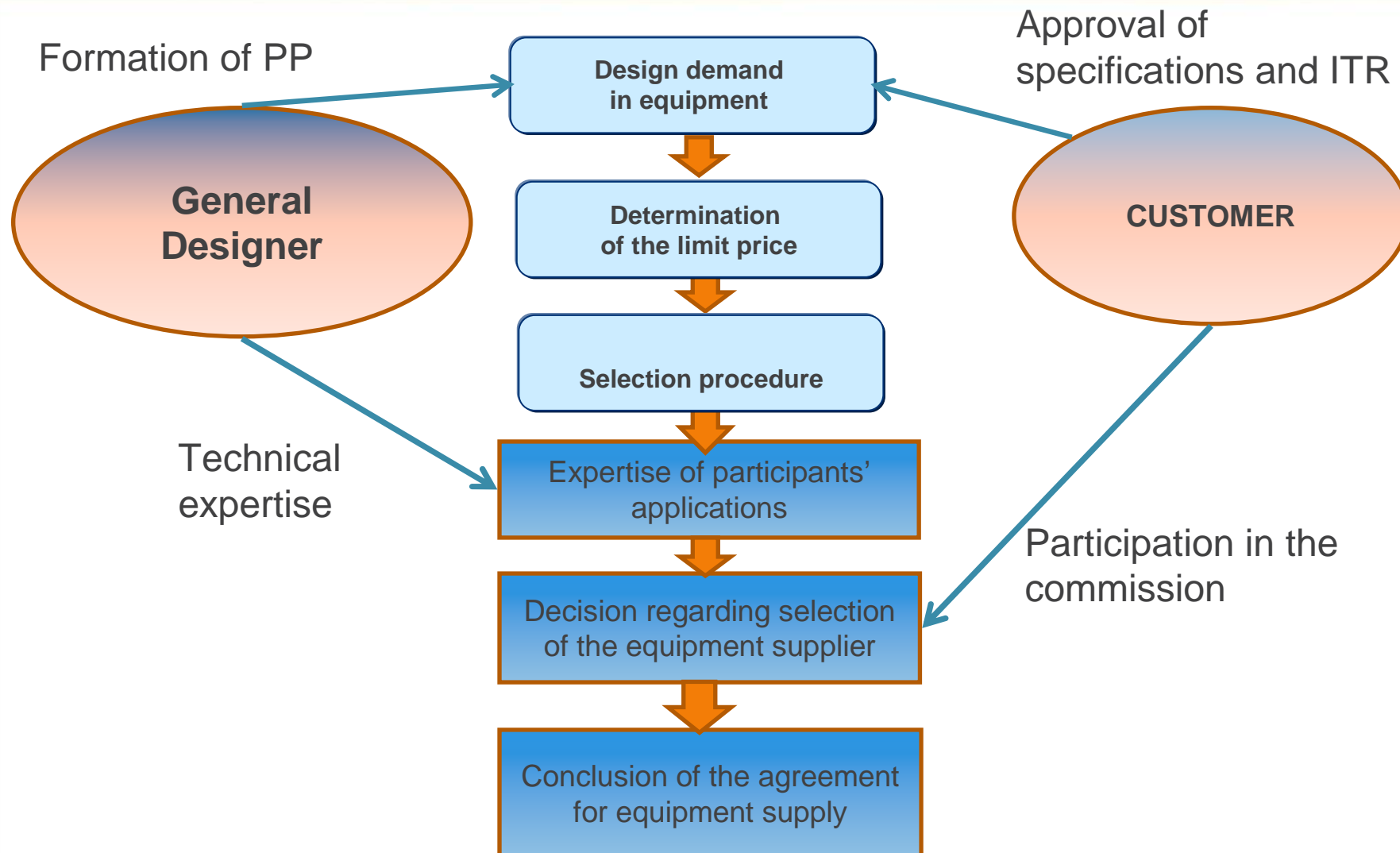
Purchase Plan for Equipment Groups*

%, of the total amount



* - TAKING INTO ACCOUNT THE SAFETY CLASS

Selection of the Potential Supplier



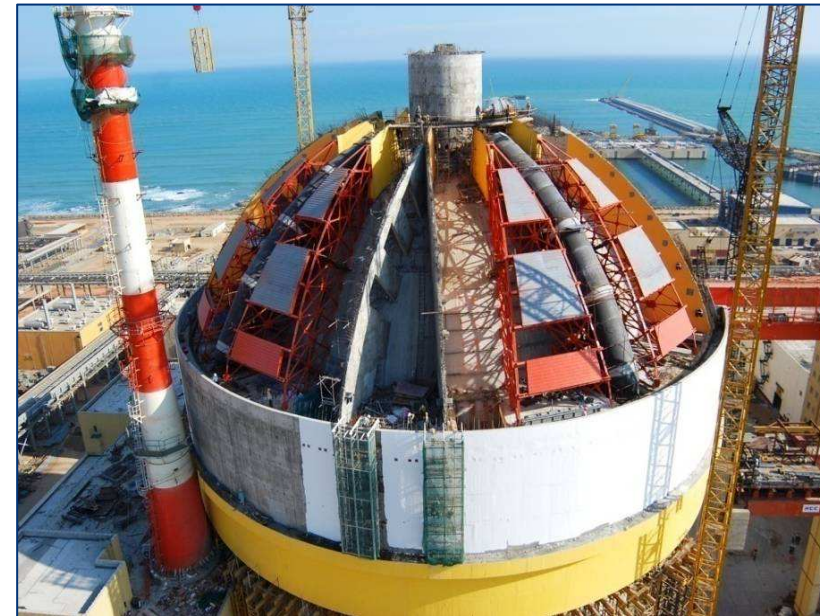
Opportunities of Localization

The Russian Party:

- Design
- Development of working documentation
- Designer supervision
- Supply of equipment and materials
- Works under the contract
- NPP commissioning
- Personnel training

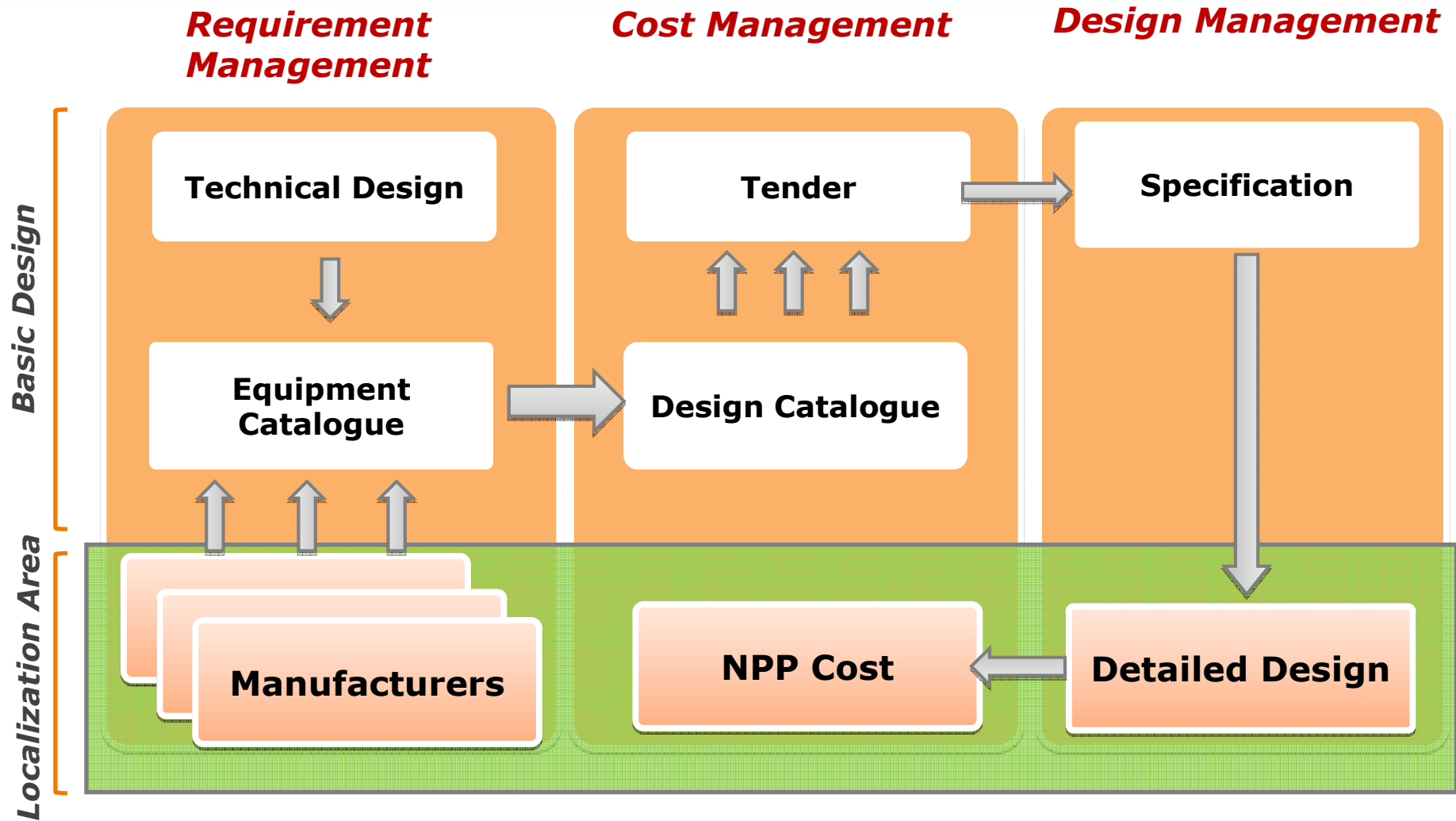
Opportunities of localization:

- Construction and erection works
- Supply of materials and equipment

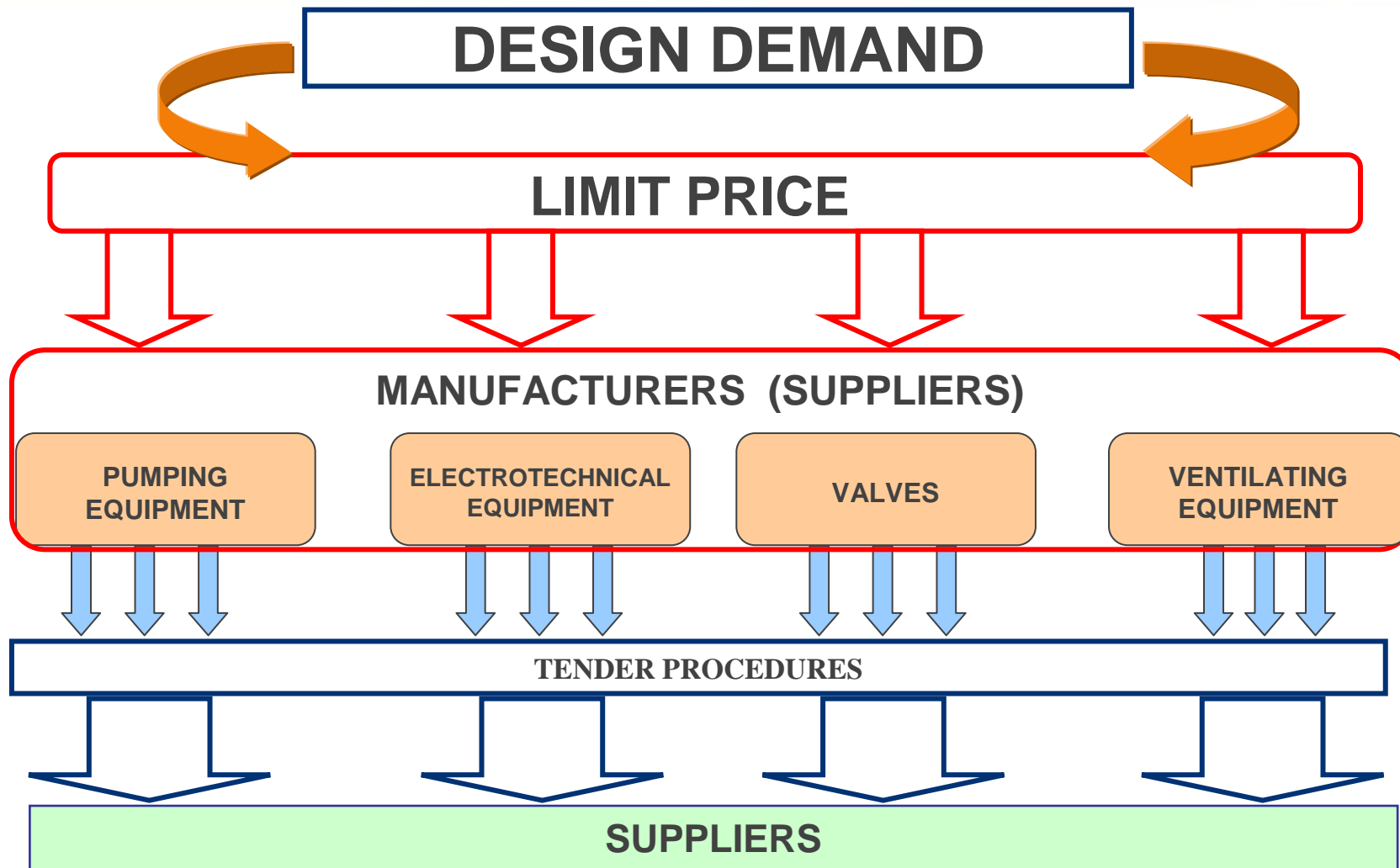


Actual opportunities of localization are determined after evaluation, on the tender basis, of bids from local partners, their experience and competences

Localization Scheme during the Equipment Purchase

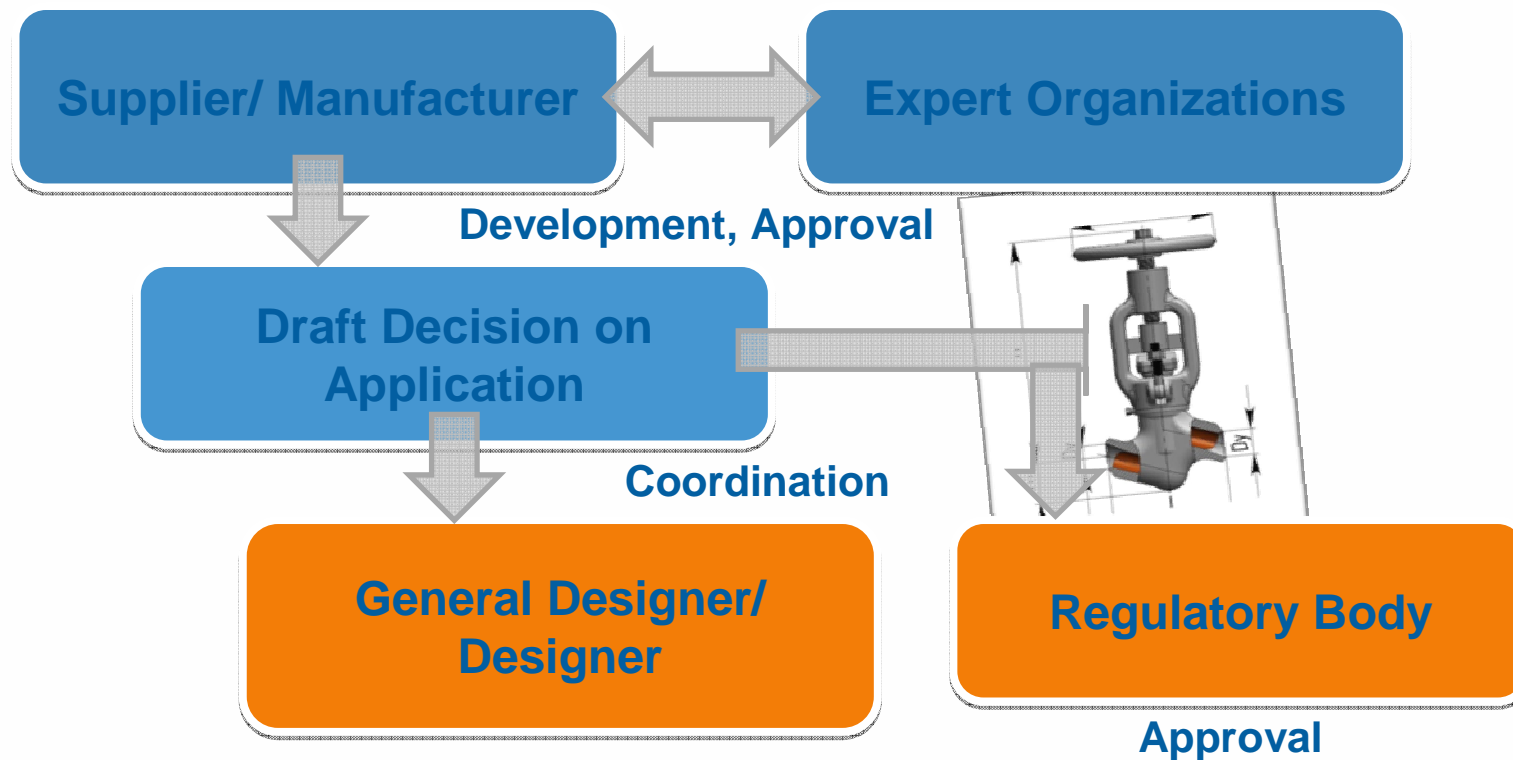


Selection of Localized Equipment Suppliers



Supplies of Import Equipment*

Procedure for Execution of the Decision on Application



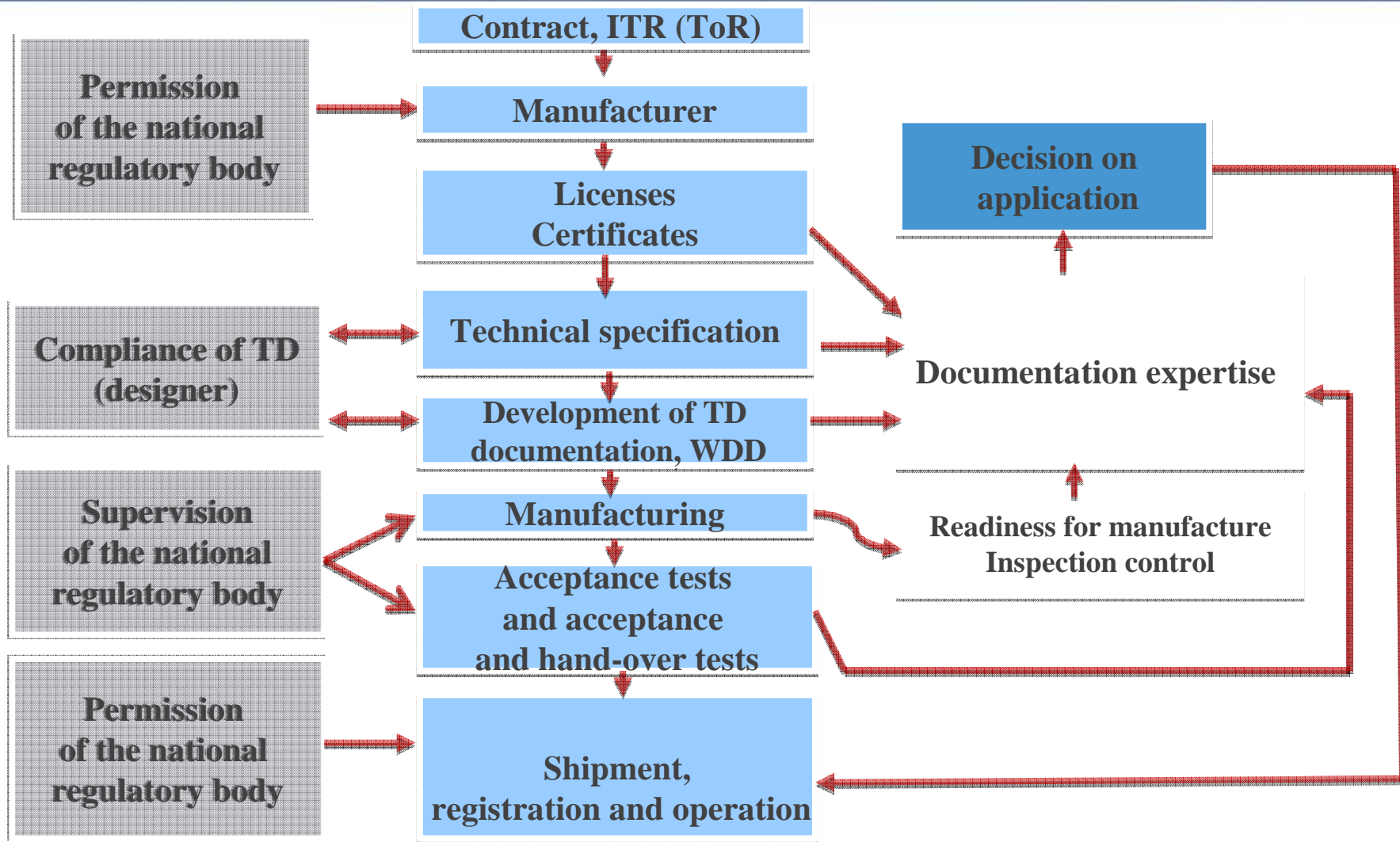
* - *Grounds – executed Decision on application*
www.rosatom.ru

The content of this presentation is for discussion purposes only, shall not be considered as an offer and doesn't lead to any obligations to Rosatom and its affiliated companies. Rosatom disclaims all responsibility for any and all mistakes, quality and completeness of the information.

Grounds for Supplies of Import Equipment

- **Positive results of the documentation expertise**
 - **Positive results of acceptance and/or acceptance and hand-over tests**
 - **Compliance with norms and rules in the field of nuclear power use in accordance with IAEA recommendations***
 - **Positive experience in application of the considered equipment at the facilities of nuclear power use**
 - **Optimization of parameters in systems, where it is supposed to use the import equipment**
-
- **When supplying the equipment to Russia, it is necessary to observe equivalence between requirements of national or international regulatory documents and requirements of Russian regulatory documents**

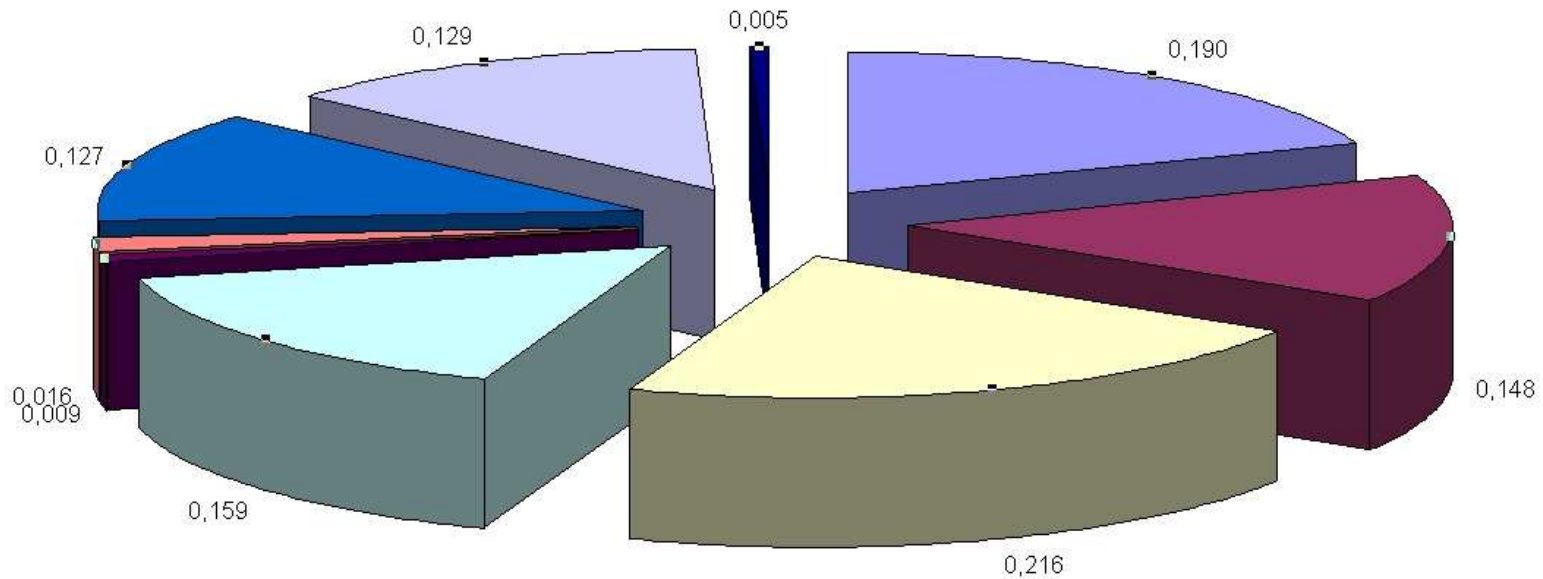
Evaluation of Compliance during Supply of the Import Equipment



Czech Origin Equipment Purchases for NPPs of NIAEP-ASE

Manufacturer (Supplier)	Valves	Load-Lifting Equipment	Pumps	Cables	Electrical Machines	Heat-Exchanging Equipment
SIGMA GROUP a.s.						
P.K.INVEST s.r.o.						
MSA a.s.						
MOSTRO a.s.						
MAPOL s.r.o.						
Arako spol s.r.o.						
ARMATURY Group a.s.						
ZVU Potez						
LDM spol s.r.o						
BELET a.s.						
Vitcovice a.s.						
KABELOVNA KABEX a.s.						
ZPA Pecky a.s.						

Distribution of Czech Equipment Supplies for Russian NPPs



Total price of supplies is adopted as one





Thank You for Attention!

A.N. Potapov

Head of Main Division for Marketing and Business
Moscow Branch of NIAEP JSC

E-mail: a.potapov@atomstroyexport.ru

Phone: +7 495 737 9037